



PELLI E TESSUTI  
FABRICS  
AND LEATHERS

OREOTTO SOFT SEATING

# LEGENDA LEGEND

## DATI TECNICI TECHNICAL DATA

1. CARATTERISTICHE
2. COMPOSIZIONE
3. PESO
4. REAZIONE AL FUOCO
5. ABRASIONE
6. SPESSORE

- EN**
1. FEATURES
  2. COMPOSITION
  3. WEIGHT
  4. FIRE TEST
  5. ABRASION
  6. THICKNESS

- FR**
1. CARACTÉRISTIQUES
  2. COMPOSITION
  3. POIDS
  4. RÉACTION AU FEU
  5. ABRASION
  6. ÉPAISSEUR

- ES**
1. CARACTERÍSTICAS
  2. COMPOSICIÓN
  3. PESO
  4. REACCIÓN AL FUEGO
  5. ABRASIÓN
  6. ESPESOR

## AVVERTENZA NOTICE

I campioni illustrati in questo catalogo corrispondono agli originali. Eventuali differenze di colore sono dovute a motivi tecnici di stampa.

- EN** The sample colours pictured in this catalogue are representations of the originals. There could be slight colour differences due to the printing technique.
- FR** Le reproduction photographique des échantillons de tissus et cuir de cette catalogue a été réalisée d'après des originaux. Toute différence de teinte éventuelle est à imputer au procédé d'impression.
- ES** Las muestras impresas en este catalogo son copia de los originales. Las ligeras variaciones que puedan existir son debidas a la impresión.

## CURA E MANUTENZIONE CARE AND MAINTENANCE



**Usare con regolarità l'aspirapolvere a beccuccio liscio.**

- EN** Use the vacuum cleaner with smooth spout regularly.
- FR** Utiliser régulièrement un aspirateur avec un embout souple.
- ES** Utilizar con regularidad una aspiradora con boquilla suave.



**Pulire con un panno umido, sciacquare con acqua ed asciugare accuratamente. Usare solo detergente neutro diluito in acqua.**

- EN** Clean with a damp cloth, rinse with water and dry thoroughly. Use only mild detergent diluted in water.
- FR** Nettoyer avec un chiffon humide, rincer à l'eau et sécher parfaitement. Utiliser seulement un détergent doux dilué dans l'eau.
- ES** Limpiar con un paño húmedo, aclarar con agua y secar minuciosamente. Utilizar solamente detergente suave diluido en agua.



**Pulire con un panno morbido asciutto.**

- EN** Clean regularly with dry soft cloth.
- FR** Nettoyer avec un chiffon doux et sec.
- ES** Limpiar con un paño suave seco.



**In caso di macchie utilizzare uno smacchiatore spray per tessuti.**

- EN** In the event stains use a stain remover spray for textile.
- FR** En cas de taches, utiliser un spray détachant pour textile.
- ES** Para eliminar manchas, utilizar un quitamanchas textil en spray.



**In caso di macchie utilizzare uno smacchiatore per pelli.**

- EN** In case of spots use a spot removaly for leathers.
- FR** En cas de taches, utiliser un spray détachant pour cuir.
- ES** Para eliminar manchas, utilizar un quitamanchas para pelli.



**Non usare sbiancanti al cloro.**

- EN** Do not use chlorine bleach.
- FR** Ne pas utiliser d'eau de Javel.
- ES** No utilizar blanqueadores o lejía.



**Non spazzolare.**

- EN** Do not brush.
- FR** Ne pas brosser.
- ES** No cepillar.

## PELLI E TESSUTI FABRICS AND LEATHERS

# AG GUATEMALA

1. SIMILPELLE / VINYL
2. 88% PVC - 8% POLIESTERE - 4% COTONE  
88% PVC - 8% POLYESTER - 4% COTTON
3. 910 GR./MTL / 910 GR./LM
4. CLASSE 1 (UNI 9175)  
CLASS 1 (UNI 9175)
5. 100.000 CICLI (UNI EN ISO 12947)  
100.000 TURNS (UNI EN ISO 12947)

PRODOTTO PRIVO DI FTALATI / PHTHALATE FREE

### CURA E MANUTENZIONE CARE AND MAINTENANCE



13AG22



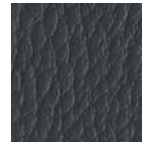
13AG46



13AG27



13AG53



13AG21



13AG26



13AG07



13AG20



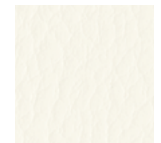
13AG31



13AG18



13AG28



13AG00

# AL LEIRIA

1. CREP / CREPE
2. 100% POLIESTERE / 100% POLYESTER
3. 350 GR./MTL / 350 GR./LM
4. CLASSE 1 (UNI 9175) EN 1021 (PARTI 1-2)  
CLASS 1 (UNI 9175) EN 1021 (PART 1-2)
5. 150.000 CICLI (UNI EN ISO 12947)  
150.000 TURNS (UNI EN ISO 12947)

### CURA E MANUTENZIONE CARE AND MAINTENANCE



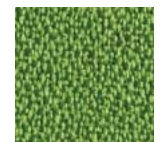
13AL02



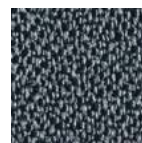
13AL06



13AL07



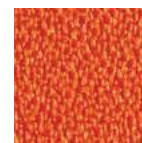
13AL05



13AL12



13AL03

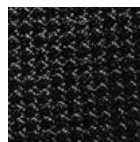


13AL20

# AR RADIO

1. TELA / CANVAS
2. 100% POLIESTERE FR / 100% POLYESTER FR
3. 560 GR./MTL / 560 GR./LM
4. EN 1021 (PARTI 1-2)  
EN 1021 (PART 1-2)
5. 50.000 CICLI (UNI EN ISO 12947)  
50.000 TURNS (UNI EN ISO 12947)

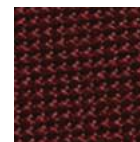
## CURA E MANUTENZIONE CARE AND MAINTENANCE



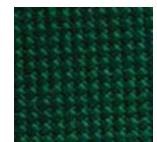
13AR02



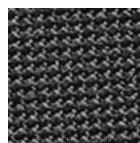
13AR06



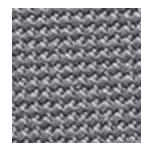
13AR04



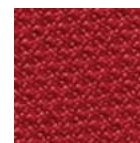
13AR05



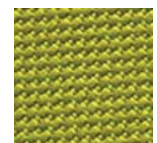
13AR12



13AR22



13AR07



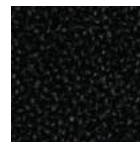
13AR65

## PELLI E TESSUTI FABRICS AND LEATHERS

### BB BELEM

1. CREP / CREPE
2. 100% POLIESTERE TREVIRA CS / 100% POLYESTER TREVIRA CS
3. 490 GR./MTL / 490 GR./LM
4. CLASSE 1 (UNI 9175)  
CLASS 1 (UNI 9175)
5. 100.000 CICLI (UNI EN ISO 12947)  
100.000 TURNS (UNI EN ISO 12947)

#### CURA E MANUTENZIONE CARE AND MAINTENANCE



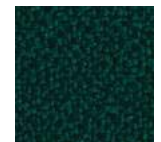
13BB02



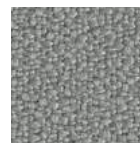
13BB26



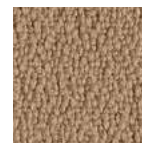
13BB07



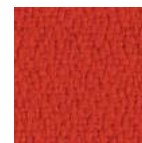
13BB35



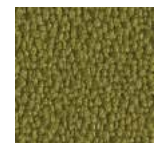
13BB12



13BB03



13BB20



13BB15

### BL LAGOS

1. TESSUTO A INTRECCI / VEAVES FABRIC
2. 100% POLIESTERE FR RICICLATO  
100% POLYESTER FR RECYCLED
3. 470 GR./MTL / 470 GR./LM
4. CLASSE 1 (UNI 9175) EN 1021 (PARTI 1-2)  
CLASS 1 (UNI 9175) EN 1021 (PART 1-2)
5. 50.000 CICLI (UNI EN ISO 12947)  
50.000 TURNS (UNI EN ISO 12947)

#### CURA E MANUTENZIONE CARE AND MAINTENANCE



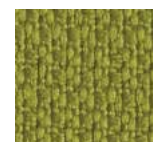
13BL02



13BL26



13BL34



13BL05



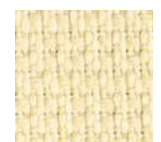
13BL21



13BL16



13BL07



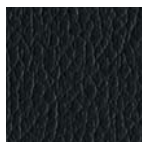
13BL10

# BR RIO

1. SIMILPELLE ANTIBATTERICA / VINYL ANTIBACTERIAL TREATMENT
2. 91% PVC - 9% POLIAMMIDE  
91% PVC - 9% POLYAMIDE
3. 994 GR./MTL / 994 GR./LM
4. CLASSE 1 (UNI 9175)  
CLASS 1 (UNI 9175)
5. UNI 4818 15 (METODO A)  
UNI 4818 15 (METHOD A)

PRODOTTO PRIVO DI FTALATI / PHTHALATE FREE

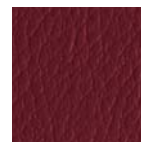
## CURA E MANUTENZIONE CARE AND MAINTENANCE



13BR02



13BR06



13BR34



13BR10



13BR21



13BR16



13BR07

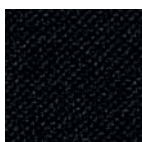


13BR00

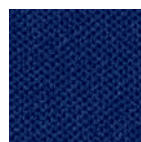
# CF FLEX

1. TESSUTO ELASTICO / STRETCH FABRIC
2. 100% POLIESTERE TREVIRA CS  
100% POLYESTER TREVIRA CS
3. 480 GR./MTL / 480 GR./LM
4. CLASSE 1 (UNI 9175) EN 1021 (PARTI 1-2)  
CLASS 1 (UNI 9175) EN 1021 (PART 1-2)
5. 50.000 CICLI (UNI EN ISO 12947)  
50.000 TURNS (UNI EN ISO 12947)

## CURA E MANUTENZIONE CARE AND MAINTENANCE



13CF02



13CF06



13CF07



13CF05



13CF21



13CF03



13CF20

## PELLI E TESSUTI FABRICS AND LEATHERS

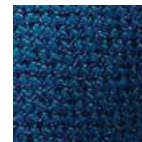
### CE ERA

1. TELA / CANVAS
2. 100% POLIESTERE  
100% POLYESTER
3. 490 GR./MTL / 490 GR./LM
4. EN 1021 (PARTI 1-2)  
EN 1021 (PART 1-2)
5. 10.000 CICLI (UNI EN ISO 12947)  
100.000 TURNS (UNI EN ISO 12947)

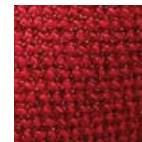
#### CURA E MANUTENZIONE CARE AND MAINTENANCE



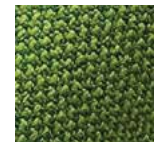
13CE19



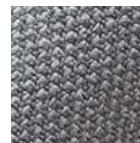
13CE06



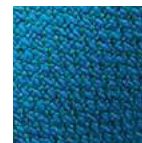
13CE07



13CE15



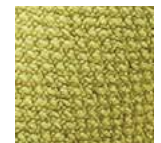
13CE12



13CE16



13CE09



13CE30

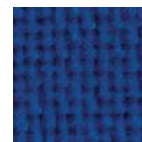
### CT TREVI

1. TELA. CANVAS
2. 100% POLIESTERE TREVIRA CS  
100% POLYESTER TREVIRA CS
3. 630 GR./MTL / 630 GR./LM
4. CLASSE 1 (UNI 9175) EN 1021 (PARTI 1-2)  
CLASS 1 (UNI 9175) EN 1021 (PART 1-2)
5. 100.000 CICLI (UNI EN ISO 12947)  
100.000 TURNS (UNI EN ISO 12947)

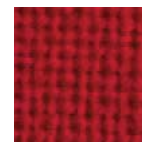
#### CURA E MANUTENZIONE CARE AND MAINTENANCE



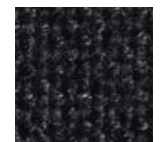
13CT02



13CT16



13CT47



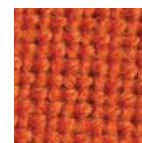
13CT32



13CT03



13CT07



13CT20

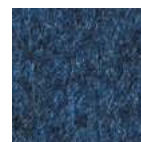
# DB BOGOTÀ

1. LANA / WOOL
2. 100% LANA  
100% WOOL
3. 825 GR./MTL / 825 GR./LM
4. EN 1021 (PARTI 1-2)  
EN 1021 (PART 1-2)
5. 60.000 CICLI (UNI EN ISO 12947)  
60.000 TURNS (UNI EN ISO 12947)

## CURA E MANUTENZIONE CARE AND MAINTENANCE



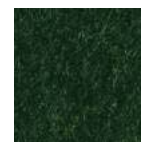
13DB02



13DB06



13DB04



13DB05



13DB12



13DB09



13DB30



13DB15



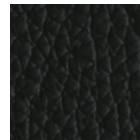
## PELLI E TESSUTI FABRICS AND LEATHERS

# EP PELLE NATURALE

1. VERA PELLE BOVINA, CONCIATA AL CROMO, TINTA IN BOTTE ALL'ANILINA, SMERIGLIATA E RIFINITA CON RESINE POLIURETANICHE / OX HIDES, CHROME TANNAGE, ANILINE-DYED, BUFFED AND FINISHED WITH POLYURETHANE RESINS.
6. 0.9 / 1.0 MM.

AVVERTENZA: LE IRREGOLARITÀ NATURALI DELLA PELLE, PUNTURE D'INSETTI, PICCOLE CICATRICI E VARIAZIONI DI COLORE CONFERMANO L'AUTENTICITÀ DEL MATERIALE, PERTANTO NON SONO MOTIVO DI RECLAMO.  
NOTICE: NATURAL FEATURES SUCH AS INSECT BITES, SMALL DEFORMITIES AND COLOR SHADING CONFIRM THE LEATHER'S AUTHENTIC CHARACTER AND ARE NOT GROUNDS FOR COMPLAINT.

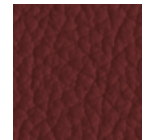
### CURA E MANUTENZIONE CARE AND MAINTENANCE



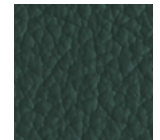
13EP02



13EP06



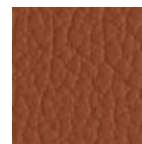
13EP34



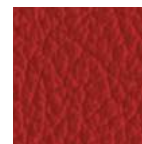
13EP05



13EP11



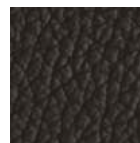
13EP17



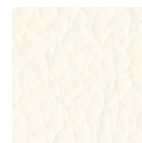
13EP07



13EP10



13EP23



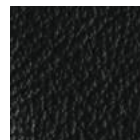
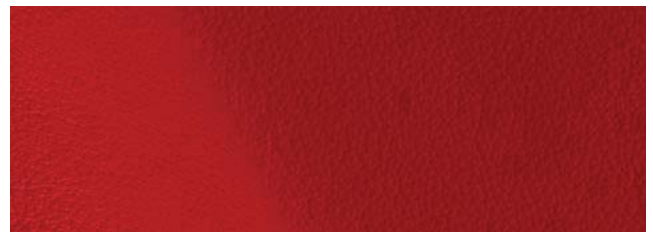
13EP00

# FP PELLE EXTRA

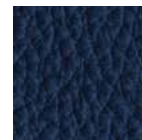
1. VERA PELLE BOVINA FIORE, CONCIATA AL CROMO, TINTA IN BOTTE ALL'ANILINA, GRANA NATURALE / OX HIDES, CHROME TANNAGE, ANILINE-DYED, NATURAL GRAIN.
6. 1.3 / 1.5 MM

AVVERTENZA: LE IRREGOLARITÀ NATURALI DELLA PELLE, PUNTURE D'INSETTI, PICCOLE CICATRICI E VARIAZIONI DI COLORE CONFERMANO L'AUTENTICITÀ DEL MATERIALE, PERTANTO NON SONO MOTIVO DI RECLAMO.  
NOTICE: NATURAL FEATURES SUCH AS INSECT BITES, SMALL DEFORMITIES AND COLOR SHADING CONFIRM THE LEATHER'S AUTHENTIC CHARACTER AND ARE NOT GROUNDS FOR COMPLAINT.

### CURA E MANUTENZIONE CARE AND MAINTENANCE



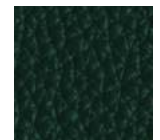
13FP32



13FP06



13FP04



13FP05



13FP11



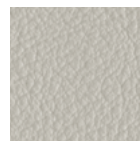
13FP03



13FP07



13FP28



13FP12



13FP10

**DESIGN BY**  
Cacao Design

**FOTO PHOTO**  
Studio Amati Bacciardi  
Stefano Campo Antico

**RENDERING**  
Croci Design

**STAMPA PRINTING**  
Grafiche Antiga

ED.04.2019



VAGHI s.r.l. via Brughetti 16/18 20813 Bovisio Masciago (MB)  
T +39 0362 591404 info@vagli.com

**VAGHI.COM**