



2019 FINITURE FINISHINGS

LINEA M BENCH SEATING SYSTEM

LEGENDA LEGEND

DATI TECNICI TECHNICAL DATA

1. CARATTERISTICHE
2. COMPOSIZIONE
3. PESO
4. REAZIONE AL FUOCO
5. ABRASIONE
6. SPESSORE

- EN**
1. FEATURES
 2. COMPOSITION
 3. WEIGHT
 4. FIRE TEST
 5. ABRASION
 6. THICKNESS

- FR**
1. CARACTÉRISTIQUES
 2. COMPOSITION
 3. POIDS
 4. RÉACTION AU FEU
 5. ABRASION
 6. ÉPAISSEUR

- ES**
1. CARACTERÍSTICAS
 2. COMPOSICIÓN
 3. PESO
 4. REACCIÓN AL FUEGO
 5. ABRASIÓN
 6. ESPESOR

AVVERTENZA NOTICE

I campioni illustrati in questo catalogo corrispondono agli originali. Eventuali differenze di colore sono dovute a motivi tecnici di stampa.

- EN** The sample colours pictured in this catalogue are representations of the originals. There could be slight colour differences due to the printing technique.
- FR** Le reproduction photographique des échantillons de tissus et cuir de cette catalogue a été réalisée d'après des originaux. Toute différence de teinte éventuelle est à imputer au procédé d'impression.
- ES** Las muestras impresas en este catalogo son copia de los originales. Las ligeras variaciones que puedan existir son debidas a la impresión.

CURA E MANUTENZIONE CARE AND MAINTENANCE



Usare con regolarità l'aspirapolvere a beccuccio liscio.

- EN** Use the vacuum cleaner with smooth spout regularly.
- FR** Utiliser régulièrement un aspirateur avec un embout souple.
- ES** Utilizar con regularidad una aspiradora con boquilla suave.



Pulire con un panno umido, sciacquare con acqua ed asciugare accuratamente. Usare solo detergente neutro diluito in acqua.

- EN** Clean with a damp cloth, rinse with water and dry thoroughly. Use only mild detergent diluted in water.
- FR** Nettoyer avec un chiffon humide, rincer à l'eau et sécher parfaitement. Utiliser seulement un détergent doux dilué dans l'eau.
- ES** Limpiar con un paño húmedo, aclarar con agua y secar minuciosamente. Utilizar solamente detergente suave diluido en agua.



Pulire con un panno morbido asciutto.

- EN** Clean regularly with dry soft cloth.
- FR** Nettoyer avec un chiffon doux et sec.
- ES** Limpiar con un paño suave seco.



In caso di macchie utilizzare uno smacchiatore spray per tessuti.

- EN** In the event stains use a stain remover spray for textile.
- FR** En cas de taches, utiliser un spray détachant pour textile.
- ES** Para eliminar manchas, utilizar un quitamanchas textil en spray.



In caso di macchie utilizzare uno smacchiatore per pelli.

- EN** In case of spots use a spot removaly for leathers.
- FR** En cas de taches, utiliser un spray détachant pour cuir.
- ES** Para eliminar manchas, utilizar un quitamanchas para pelli.



Non usare sbiancanti al cloro.

- EN** Do not use chlorine bleach.
- FR** Ne pas utiliser d'eau de Javel.
- ES** No utilizar blanqueadores o lejía.



Non spazzolare.

- EN** Do not brush.
- FR** Ne pas brosser.
- ES** No cepillar.

PELLI E TESSUTI FABRICS AND LEATHERS

AG GUATEMALA

1. SIMILPELLE / VINYL
2. 88% PVC - 8% POLIESTERE - 4% COTONE
88% PVC - 8% POLYESTER - 4% COTTON
3. 910 GR./MTL / 910 GR./LM
4. CLASSE 1 (UNI 9175)
CLASS 1 (UNI 9175)
5. 100.000 CICLI (UNI EN ISO 12947)
100.000 TURNS (UNI EN ISO 12947)

PRODOTTO PRIVO DI FTALATI / PHTHALATE FREE

CURA E MANUTENZIONE CARE AND MAINTENANCE



13AG22



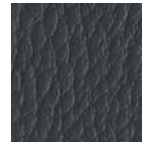
13AG46



13AG27



13AG53



13AG21



13AG26



13AG07



13AG20



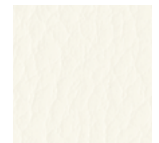
13AG31



13AG18



13AG28



13AG00

AL LEIRIA

1. CREP / CREPE
2. 100% POLIESTERE / 100% POLYESTER
3. 350 GR./MTL / 350 GR./LM
4. CLASSE 1 (UNI 9175) EN 1021 (PARTI 1-2)
CLASS 1 (UNI 9175) EN 1021 (PART 1-2)
5. 150.000 CICLI (UNI EN ISO 12947)
150.000 TURNS (UNI EN ISO 12947)

CURA E MANUTENZIONE CARE AND MAINTENANCE



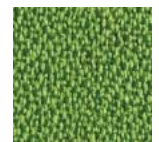
13AL02



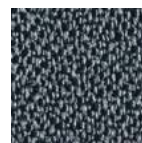
13AL06



13AL07



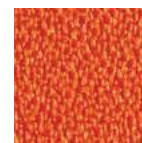
13AL05



13AL12



13AL03



13AL20

AF FARO

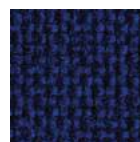
1. TELA / CANVAS
2. 100% PERFENTEX®
3. 320 GR./MTL / 320 GR./LM
4. CLASSE 1 (UNI 9175) EN 1021 (PARTI 1-2)
CLASS 1 (UNI 9175) EN 1021 (PART 1-2)
5. BS EN 14465 GRADO B
BS EN 14465 GRADE B

IN **GRASSETTO**, RIVESTIMENTI DISPONIBILI PER LINEA QUICK SERVICE.
IN **BOLD**, FABRICS AVAILABLE FOR QUICK SERVICE RANGE.

CURA E MANUTENZIONE CARE AND MAINTENANCE



13AF02



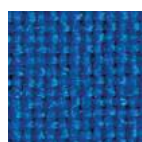
13AF36



13AF07



13AF12

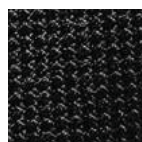


13AF26

AR RADIO

1. TELA / CANVAS
2. 100% POLIESTERE FR / 100% POLYESTER FR
3. 560 GR./MTL / 560 GR./LM
4. EN 1021 (PARTI 1-2)
EN 1021 (PART 1-2)
5. 50.000 CICLI (UNI EN ISO 12947)
50.000 TURNS (UNI EN ISO 12947)

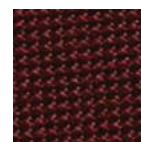
CURA E MANUTENZIONE CARE AND MAINTENANCE



13AR02



13AR06



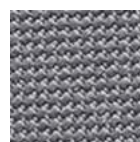
13AR04



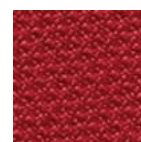
13AR05



13AR12



13AR22



13AR07



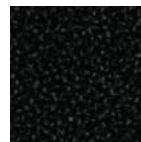
13AR65

PELLI E TESSUTI FABRICS AND LEATHERS

BB BELEM

1. CREP / CREPE
2. 100% POLIESTERE TREVIRA CS / 100% POLYESTER TREVIRA CS
3. 490 GR./MTL / 490 GR./LM
4. CLASSE 1 (UNI 9175)
CLASS 1 (UNI 9175)
5. 100.000 CICLI (UNI EN ISO 12947)
100.000 TURNS (UNI EN ISO 12947)

CURA E MANUTENZIONE CARE AND MAINTENANCE



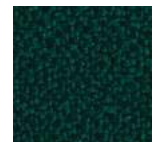
13BB02



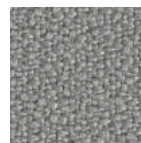
13BB26



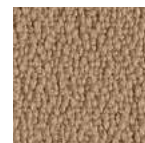
13BB07



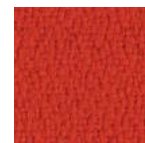
13BB35



13BB12



13BB03



13BB20



13BB15

BL LAGOS

1. TESSUTO A INTRECCI / VEAVES FABRIC
2. 100% POLIESTERE FR RICICLATO
100% POLYESTER FR RECYCLED
3. 470 GR./MTL / 470 GR./LM
4. CLASSE 1 (UNI 9175) EN 1021 (PARTI 1-2)
CLASS 1 (UNI 9175) EN 1021 (PART 1-2)
5. 50.000 CICLI (UNI EN ISO 12947)
50.000 TURNS (UNI EN ISO 12947)

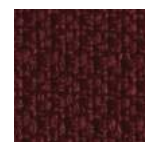
CURA E MANUTENZIONE CARE AND MAINTENANCE



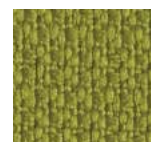
13BL02



13BL26



13BL34



13BL05



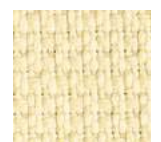
13BL21



13BL16



13BL07



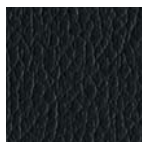
13BL10

BR RIO

1. SIMILPELLE ANTIBATTERICA / VINYL ANTIBACTERIAL TREATMENT
2. 91% PVC - 9% POLIAMMIDE
91% PVC - 9% POLYAMIDE
3. 994 GR./MTL / 994 GR./LM
4. CLASSE 1 (UNI 9175)
CLASS 1 (UNI 9175)
5. UNI 4818 15 (METODO A)
UNI 4818 15 (METHOD A)

PRODOTTO PRIVO DI FTALATI / PHTHALATE FREE

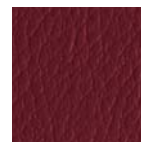
CURA E MANUTENZIONE CARE AND MAINTENANCE



13BR02



13BR06



13BR34



13BR10



13BR21



13BR16



13BR07

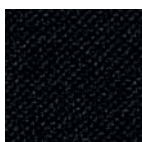


13BR00

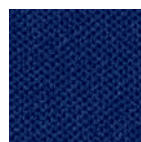
CF FLEX

1. TESSUTO ELASTICO / STRETCH FABRIC
2. 100% POLIESTERE TREVIRA CS
100% POLYESTER TREVIRA CS
3. 480 GR./MTL / 480 GR./LM
4. CLASSE 1 (UNI 9175) EN 1021 (PARTI 1-2)
CLASS 1 (UNI 9175) EN 1021 (PART 1-2)
5. 50.000 CICLI (UNI EN ISO 12947)
50.000 TURNS (UNI EN ISO 12947)

CURA E MANUTENZIONE CARE AND MAINTENANCE



13CF02



13CF06



13CF07



13CF05



13CF21



13CF03



13CF20

PELLI E TESSUTI FABRICS AND LEATHERS

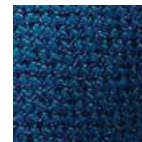
CE ERA

1. TELA / CANVAS
2. 100% POLIESTERE
100% POLYESTER
3. 490 GR./MTL / 490 GR./LM
4. EN 1021 (PARTI 1-2)
EN 1021 (PART 1-2)
5. 10.000 CICLI (UNI EN ISO 12947)
100.000 TURNS (UNI EN ISO 12947)

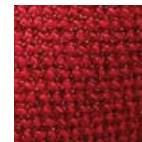
CURA E MANUTENZIONE CARE AND MAINTENANCE



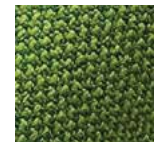
13CE19



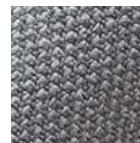
13CE06



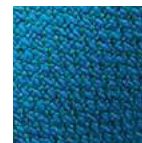
13CE07



13CE15



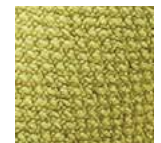
13CE12



13CE16



13CE09



13CE30

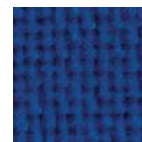
CT TREVI

1. TELA. CANVAS
2. 100% POLIESTERE TREVIRA CS
100% POLYESTER TREVIRA CS
3. 630 GR./MTL / 630 GR./LM
4. CLASSE 1 (UNI 9175) EN 1021 (PARTI 1-2)
CLASS 1 (UNI 9175) EN 1021 (PART 1-2)
5. 100.000 CICLI (UNI EN ISO 12947)
100.000 TURNS (UNI EN ISO 12947)

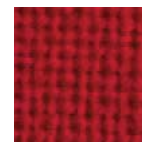
CURA E MANUTENZIONE CARE AND MAINTENANCE



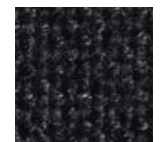
13CT02



13CT16



13CT47



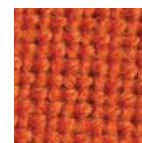
13CT32



13CT03



13CT07



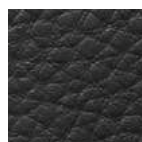
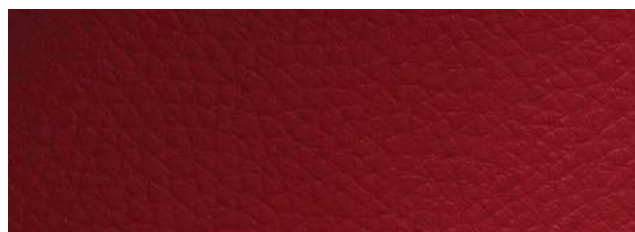
13CT20

CR MERIDA IGNIFUGO

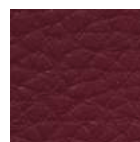
1. SIMILPELLE TRASPIRANTE / BREATHABLE VINYL
2. 41% POLIURETANO - 18% POLIESTERE - 41% COTONE
41% POLYURETHANE - 18% POLYESTER - 41% COTTON
3. 560 GR./MTL / 560 GR./LM
4. CLASSE 1 (UNI 9175)
CLASS 1 (UNI 9175)
5. 100.000 CICLI (UNI EN ISO 12947)
100.000 TURNS (UNI EN ISO 12947)

PRODOTTO PRIVO DI FTALATI / PHTHALATE FREE

CURA E MANUTENZIONE CARE AND MAINTENANCE



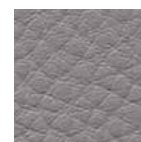
13CR32



13CR44



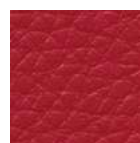
13CR53



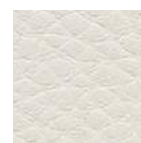
13CR52



13CR66



13CR67



13CR11

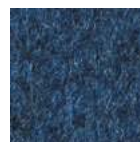
DB BOGOTÀ

1. LANA / WOOL
2. 100% LANA
100% WOOL
3. 825 GR./MTL / 825 GR./LM
4. EN 1021 (PARTI 1-2)
EN 1021 (PART 1-2)
5. 60.000 CICLI (UNI EN ISO 12947)
60.000 TURNS (UNI EN ISO 12947)

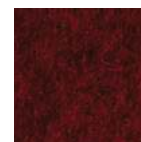
CURA E MANUTENZIONE CARE AND MAINTENANCE



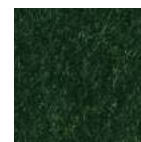
13DB02



13DB06



13DB04



13DB05



13DB12



13DB09



13DB30



13DB15

PLASTICA PLASTIC

1. POLIPROPILENE O POLIAMMIDE,
TRATTAMENTO SUPERFICIALE GOFFRATO
ANTIGRAFFIO.
POLYPROPYLENE OR POLYAMIDE,
ANTI-SCRATCH EMBOSSED FINISH.
7. UNI 10782

CURA E MANUTENZIONE CARE AND MAINTENANCE



CROMATURA METALLO METAL CHROMIUM PLATING

1. TRATTAMENTO GALVANICO
CON APPLICAZIONE DI NICHEL E CROMO,
SPESSORE 30/50 μ , FINITURA LUCIDA.
NICKEL AND CHROMIUM PLATING FIXED
WITH GALVANIC TREATMENT, THICKNESS
30/50 μ , GLOSSY FINISH.
7. UNI 10782

CURA E MANUTENZIONE CARE AND MAINTENANCE



VERNICIATURA METALLO METAL COATING

1. POLVERI EPOSSI-POLIESTERE TERMOINDURENTI
APPLICATE ELETTROSTATICAMENTE,
SPESSORE 70/90 μ , GLOSS 2-10, FINITURA
BUCCIATA ANTIGRAFFIO.
EPOXY-POLYESTER THERMOSETTING POWDERS
ELECTROSTATICALLY FIXED, THICKNESS 70/90 μ ,
GLOSS 2-10, ANTI-SCRATCH EMBOSSED FINISH.
7. UNI EN ISO 9227

CURA E MANUTENZIONE CARE AND MAINTENANCE



DESIGN BY
Cacao Design

FOTO PHOTO
Studio Amati Bacciardi
Stefano Campo Antico

RENDERING
Crocì Design

STAMPA PRINTING
Grafiche Antiga

ED.04.2019



VAGHI s.r.l. via Brughetti 16/18 20813 Bovisio Masciago (MB)
T +39 0362 591404 info@vagli.com

VAGHI.COM