



PELLI E TESSUTI  
FABRICS  
AND LEATHERS

LINEA R BENCH SEATING SYSTEM

# LEGENDA LEGEND

## DATI TECNICI TECHNICAL DATA

1. CARATTERISTICHE
2. COMPOSIZIONE
3. PESO
4. REAZIONE AL FUOCO
5. ABRASIONE
6. SPESSORE

- EN**
1. FEATURES
  2. COMPOSITION
  3. WEIGHT
  4. FIRE TEST
  5. ABRASION
  6. THICKNESS

- FR**
1. CARACTÉRISTIQUES
  2. COMPOSITION
  3. POIDS
  4. RÉACTION AU FEU
  5. ABRASION
  6. ÉPAISSEUR

- ES**
1. CARACTERÍSTICAS
  2. COMPOSICIÓN
  3. PESO
  4. REACCIÓN AL FUEGO
  5. ABRASIÓN
  6. ESPESOR

## AVVERTENZA NOTICE

I campioni illustrati in questo catalogo corrispondono agli originali. Eventuali differenze di colore sono dovute a motivi tecnici di stampa.

- EN** The sample colours pictured in this catalogue are representations of the originals. There could be slight colour differences due to the printing technique.
- FR** Le reproduction photographique des échantillons de tissus et cuir de cette catalogue a été réalisée d'après des originaux. Toute différence de teinte éventuelle est à imputer au procédé d'impression.
- ES** Las muestras impresas en este catalogo son copia de los originales. Las ligeras variaciones que puedan existir son debidas a la impresión.

## CURA E MANUTENZIONE CARE AND MAINTENANCE



**Usare con regolarità l'aspirapolvere a beccuccio liscio.**

- EN** Use the vacuum cleaner with smooth spout regularly.
- FR** Utiliser régulièrement un aspirateur avec un embout souple.
- ES** Utilizar con regularidad una aspiradora con boquilla suave.



**Pulire con un panno umido, sciacquare con acqua ed asciugare accuratamente. Usare solo detergente neutro diluito in acqua.**

- EN** Clean with a damp cloth, rinse with water and dry thoroughly. Use only mild detergent diluted in water.
- FR** Nettoyer avec un chiffon humide, rincer à l'eau et sécher parfaitement. Utiliser seulement un détergent doux dilué dans l'eau.
- ES** Limpiar con un paño húmedo, aclarar con agua y secar minuciosamente. Utilizar solamente detergente suave diluido en agua.



**Pulire con un panno morbido asciutto.**

- EN** Clean regularly with dry soft cloth.
- FR** Nettoyer avec un chiffon doux et sec.
- ES** Limpiar con un paño suave seco.



**In caso di macchie utilizzare uno smacchiatore spray per tessuti.**

- EN** In the event stains use a stain remover spray for textile.
- FR** En cas de taches, utiliser un spray détachant pour textile.
- ES** Para eliminar manchas, utilizar un quitamanchas textil en spray.



**In caso di macchie utilizzare uno smacchiatore per pelli.**

- EN** In case of spots use a spot removaly for leathers.
- FR** En cas de taches, utiliser un spray détachant pour cuir.
- ES** Para eliminar manchas, utilizar un quitamanchas para pelli.



**Non usare sbiancanti al cloro.**

- EN** Do not use chlorine bleach.
- FR** Ne pas utiliser d'eau de Javel.
- ES** No utilizar blanqueadores o lejía.



**Non spazzolare.**

- EN** Do not brush.
- FR** Ne pas brosser.
- ES** No cepillar.

## PELLI E TESSUTI FABRICS AND LEATHERS

# AG GUATEMALA

1. SIMILPELLE / VINYL
2. 88% PVC - 8% POLIESTERE - 4% COTONE  
88% PVC - 8% POLYESTER - 4% COTTON
3. 910 GR./MTL / 910 GR./LM
4. CLASSE 1 (UNI 9175)  
CLASS 1 (UNI 9175)
5. 100.000 CICLI (UNI EN ISO 12947)  
100.000 TURNS (UNI EN ISO 12947)

PRODOTTO PRIVO DI FTALATI / PHTHALATE FREE

### CURA E MANUTENZIONE CARE AND MAINTENANCE



13AG22



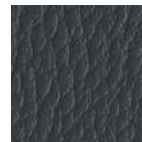
13AG46



13AG27



13AG53



13AG21



13AG26



13AG07



13AG20



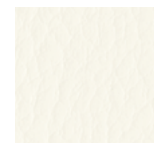
13AG31



13AG18



13AG28



13AG00

# AL LEIRIA

1. CREP / CREPE
2. 100% POLIESTERE / 100% POLYESTER
3. 350 GR./MTL / 350 GR./LM
4. CLASSE 1 (UNI 9175) EN 1021 (PARTI 1-2)  
CLASS 1 (UNI 9175) EN 1021 (PART 1-2)
5. 150.000 CICLI (UNI EN ISO 12947)  
150.000 TURNS (UNI EN ISO 12947)

### CURA E MANUTENZIONE CARE AND MAINTENANCE



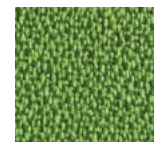
13AL02



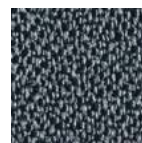
13AL06



13AL07



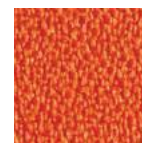
13AL05



13AL12



13AL03



13AL20

# AF FARO

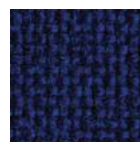
1. TELA / CANVAS
2. 100% PERFENTEX®
3. 320 GR./MTL / 320 GR./LM
4. CLASSE 1 (UNI 9175) EN 1021 (PARTI 1-2)  
CLASS 1 (UNI 9175) EN 1021 (PART 1-2)
5. BS EN 14465 GRADO B  
BS EN 14465 GRADE B

IN **GRASSETTO**, RIVESTIMENTI DISPONIBILI PER LINEA QUICK SERVICE.  
IN **BOLD**, FABRICS AVAILABLE FOR QUICK SERVICE RANGE.

## CURA E MANUTENZIONE CARE AND MAINTENANCE



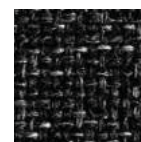
13AF02



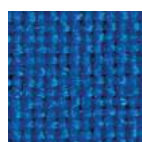
13AF36



13AF07



13AF12

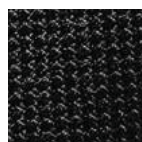


13AF26

# AR RADIO

1. TELA / CANVAS
2. 100% POLIESTERE FR / 100% POLYESTER FR
3. 560 GR./MTL / 560 GR./LM
4. EN 1021 (PARTI 1-2)  
EN 1021 (PART 1-2)
5. 50.000 CICLI (UNI EN ISO 12947)  
50.000 TURNS (UNI EN ISO 12947)

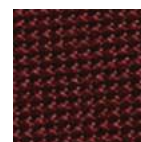
## CURA E MANUTENZIONE CARE AND MAINTENANCE



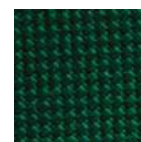
13AR02



13AR06



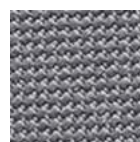
13AR04



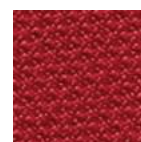
13AR05



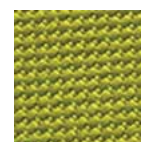
13AR12



13AR22



13AR07



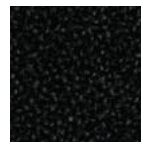
13AR65

## PELLI E TESSUTI FABRICS AND LEATHERS

### BB BELEM

1. CREP / CREPE
2. 100% POLIESTERE TREVIRA CS / 100% POLYESTER TREVIRA CS
3. 490 GR./MTL / 490 GR./LM
4. CLASSE 1 (UNI 9175)  
CLASS 1 (UNI 9175)
5. 100.000 CICLI (UNI EN ISO 12947)  
100.000 TURNS (UNI EN ISO 12947)

#### CURA E MANUTENZIONE CARE AND MAINTENANCE



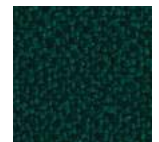
13BB02



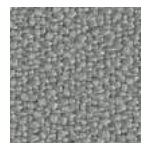
13BB26



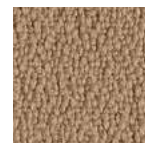
13BB07



13BB35



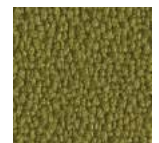
13BB12



13BB03



13BB20



13BB15

### BL LAGOS

1. TESSUTO A INTRECCI / VEAVES FABRIC
2. 100% POLIESTERE FR RICICLATO  
100% POLYESTER FR RECYCLED
3. 470 GR./MTL / 470 GR./LM
4. CLASSE 1 (UNI 9175) EN 1021 (PARTI 1-2)  
CLASS 1 (UNI 9175) EN 1021 (PART 1-2)
5. 50.000 CICLI (UNI EN ISO 12947)  
50.000 TURNS (UNI EN ISO 12947)

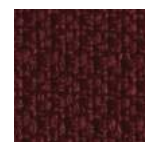
#### CURA E MANUTENZIONE CARE AND MAINTENANCE



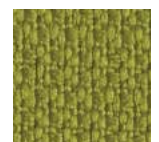
13BL02



13BL26



13BL34



13BL05



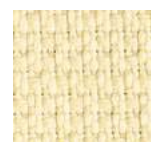
13BL21



13BL16



13BL07



13BL10

# BR RIO

1. SIMILPELLE ANTIBATTERICA / VINYL ANTIBACTERIAL TREATMENT
2. 91% PVC - 9% POLIAMMIDE  
91% PVC - 9% POLYAMIDE
3. 994 GR./MTL / 994 GR./LM
4. CLASSE 1 (UNI 9175)  
CLASS 1 (UNI 9175)
5. UNI 4818 15 (METODO A)  
UNI 4818 15 (METHOD A)

PRODOTTO PRIVO DI FTALATI / PHTHALATE FREE

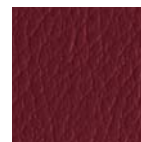
## CURA E MANUTENZIONE CARE AND MAINTENANCE



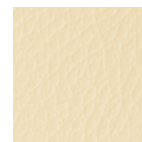
13BR02



13BR06



13BR34



13BR10



13BR21



13BR16



13BR07

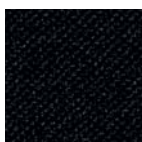


13BR00

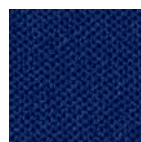
# CF FLEX

1. TESSUTO ELASTICO / STRETCH FABRIC
2. 100% POLIESTERE TREVIRA CS  
100% POLYESTER TREVIRA CS
3. 480 GR./MTL / 480 GR./LM
4. CLASSE 1 (UNI 9175) EN 1021 (PARTI 1-2)  
CLASS 1 (UNI 9175) EN 1021 (PART 1-2)
5. 50.000 CICLI (UNI EN ISO 12947)  
50.000 TURNS (UNI EN ISO 12947)

## CURA E MANUTENZIONE CARE AND MAINTENANCE



13CF02



13CF06



13CF07



13CF05



13CF21



13CF03



13CF20

## PELLI E TESSUTI FABRICS AND LEATHERS

### CE ERA

1. TELA / CANVAS
2. 100% POLIESTERE  
100% POLYESTER
3. 490 GR./MTL / 490 GR./LM
4. EN 1021 (PARTI 1-2)  
EN 1021 (PART 1-2)
5. 10.000 CICLI (UNI EN ISO 12947)  
100.000 TURNS (UNI EN ISO 12947)

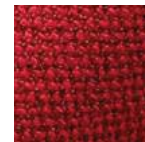
#### CURA E MANUTENZIONE CARE AND MAINTENANCE



13CE19



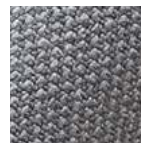
13CE06



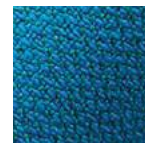
13CE07



13CE15



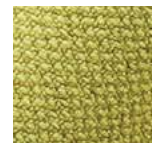
13CE12



13CE16



13CE09



13CE30

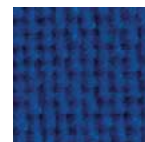
### CT TREVI

1. TELA. CANVAS
2. 100% POLIESTERE TREVIRA CS  
100% POLYESTER TREVIRA CS
3. 630 GR./MTL / 630 GR./LM
4. CLASSE 1 (UNI 9175) EN 1021 (PARTI 1-2)  
CLASS 1 (UNI 9175) EN 1021 (PART 1-2)
5. 100.000 CICLI (UNI EN ISO 12947)  
100.000 TURNS (UNI EN ISO 12947)

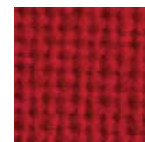
#### CURA E MANUTENZIONE CARE AND MAINTENANCE



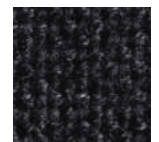
13CT02



13CT16



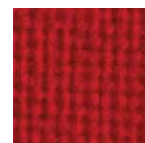
13CT47



13CT32



13CT03



13CT07



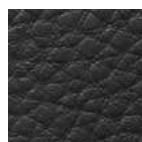
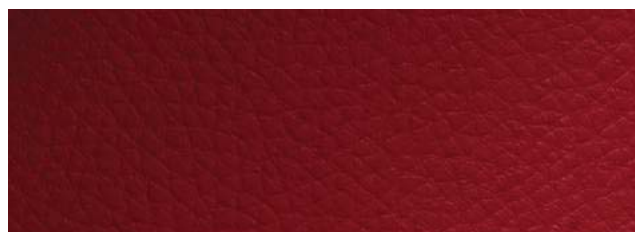
13CT20

# CR MERIDA IGNIFUGO

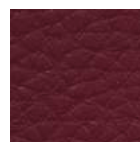
1. SIMILPELLE TRASPIRANTE / BREATHABLE VINYL
2. 41% POLIURETANO - 18% POLIESTERE - 41% COTONE  
41% POLYURETHANE - 18% POLYESTER - 41% COTTON
3. 560 GR./MTL / 560 GR./LM
4. CLASSE 1 (UNI 9175)  
CLASS 1 (UNI 9175)
5. 100.000 CICLI (UNI EN ISO 12947)  
100.000 TURNS (UNI EN ISO 12947)

PRODOTTO PRIVO DI FTALATI / PHTHALATE FREE

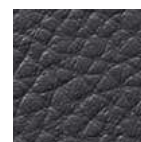
## CURA E MANUTENZIONE CARE AND MAINTENANCE



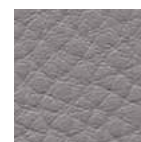
13CR32



13CR44



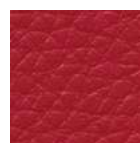
13CR53



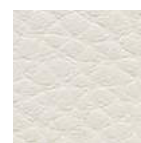
13CR52



13CR66



13CR67



13CR11

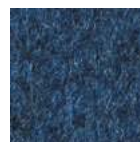
# DB BOGOTÀ

1. LANA / WOOL
2. 100% LANA  
100% WOOL
3. 825 GR./MTL / 825 GR./LM
4. EN 1021 (PARTI 1-2)  
EN 1021 (PART 1-2)
5. 60.000 CICLI (UNI EN ISO 12947)  
60.000 TURNS (UNI EN ISO 12947)

## CURA E MANUTENZIONE CARE AND MAINTENANCE



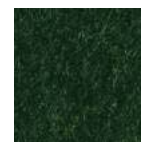
13DB02



13DB06



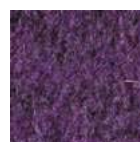
13DB04



13DB05



13DB12



13DB09



13DB30



13DB15

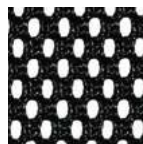
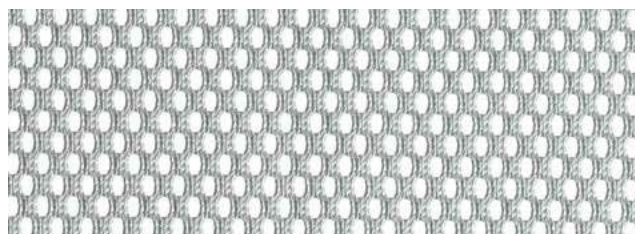


# RE RETE

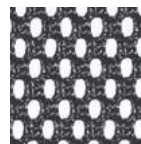
1. TESSUTO TECNICO / TECHNICAL FABRIC
2. 100% POLIESTERE  
100% POLYESTER
3. 430 GR./MTL / 430 GR./LM
4. CLASSE 1 (UNI 9175) SOLO PER CODICE 13R1IM  
CLASS 1 (UNI 9175) ONLY FOR CODE 13R1IM
5. 100.000 CICLI (UNI EN ISO 12947)  
100.000 TURNS (UNI EN ISO 12947)

DISPONIBILE PER EXPO, EXPO LIGHT, BURSA RETE EVOLUTION,  
MOREA WIND, 101 RETE, LINEA R E ASSIA.  
AVAILABLE FOR EXPO, EXPO LIGHT, BURSA RETE EVOLUTION,  
MOREA WIND, 101 RETE, LINEA R AND ASSIA.

## CURA E MANUTENZIONE CARE AND MAINTENANCE



13RETE - 13R1IM



13RE\_P



13RE\_G



13RE\_B



13RE\_M

**DESIGN BY**  
Cacao Design

**FOTO PHOTO**  
Studio Amati Bacciardi  
Stefano Campo Antico

**RENDERING**  
Croci Design

**STAMPA PRINTING**  
Grafiche Antiga

ED.04.2019



VAGHI s.r.l. via Brughetti 16/18 20813 Bovisio Masciago (MB)  
T +39 0362 591404 info@vagli.com

**VAGHI.COM**